

# **AMC**

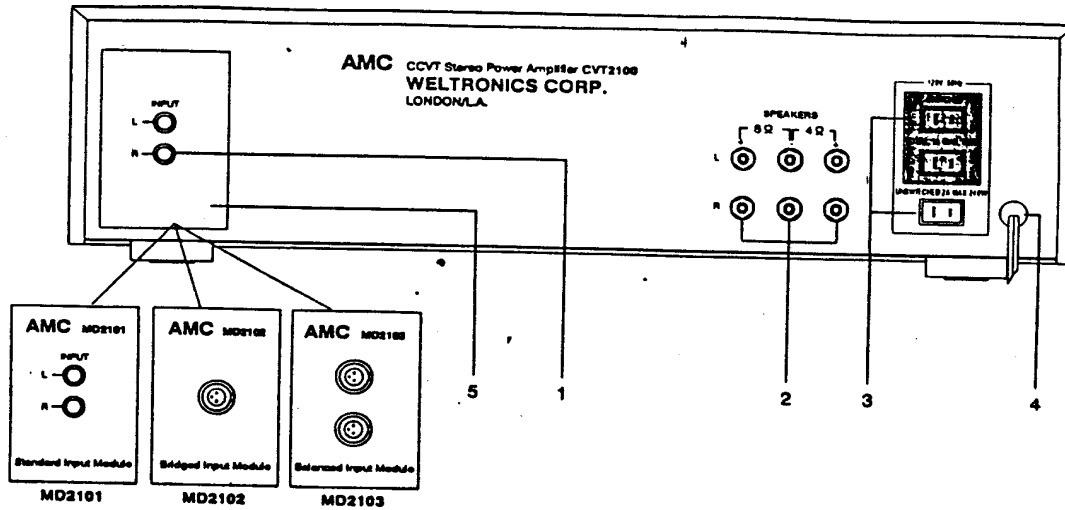
**SERVICE MANUAL**

# **CVT2100**

**VALVE POWER AMPLIFIER**

# REAR PANEL CONNECTIONS/FRONT PANEL CONTROLS

## REAR PANEL



1. INPUT MODULE

2. LOUDSPEAKER TERMINALS

3. AC CONVENIENCE OUTLETS

4. AC LINE CORD

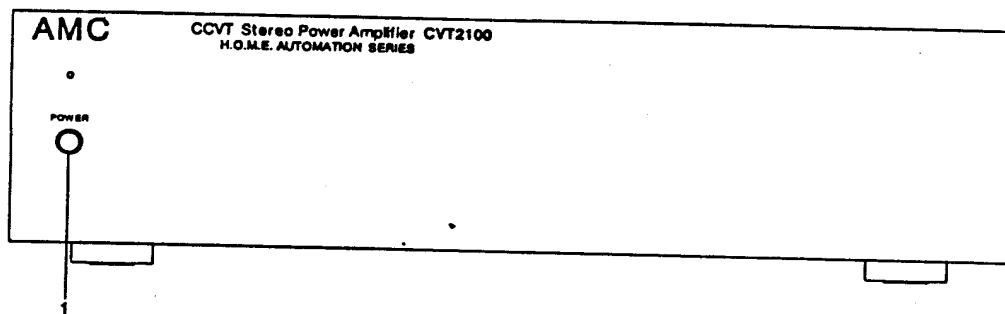
5. MD21XX Modules;

MD2101, Standard Input Module Included

MD2102, Bridge & Balanced Input Module - Option

MD2103, Balanced Input Module - Option

## FRONT PANEL

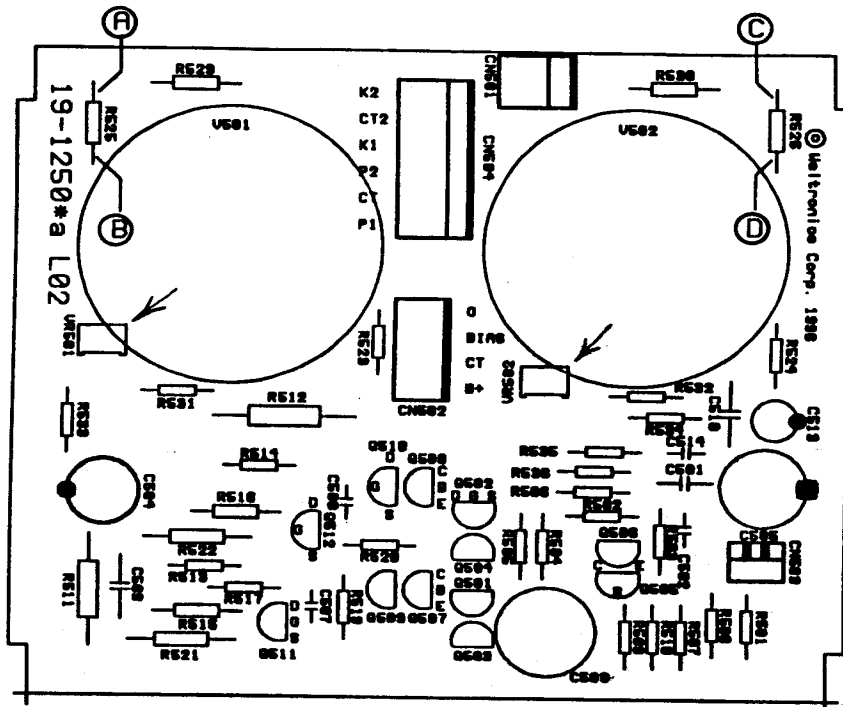


1. POWER SWITCH

# SPECIFICATIONS

Power output into 8/4 ohms.....	80W
With both channels driven	
With balanced bridged input module.....	160W
Rated T.H.D. 45Hz-20KHz.....	1.0%
1KHz clipping power into 8/4 ohms.....	85W
Input sensitivity for 1W/80W into 8 ohms.....	138mV/1230mV
Input impedance.....	500K ohms/470pF
<b>Frequency response:</b>	
20Hz-20KHz.....	+/-0.5dB
-3dB.....	10Hz/80KHz
<b>Signal to noise ratio (ref. 1W/8 ohms):</b>	
"A" WTD. ....	95dB
UN-WTD. ....	85dB
Separation 20Hz-20KHz.....	> 65dB
Overall feedback.....	14dB
Dimensions (WxHxD).....	430x112x288mm
Net weight.....	19Kg
Shipping weight.....	20Kg

# POWER AMPLIFIER ADJUSTMENT



## IMPORTANT NOTES:

1. Make sure the primary voltage to be connected is accurately as the unit defined.
2. Before adjusting, turn VR501 clockwise and VR502 counterclockwise to the end position. (value of semi-potentiometer are setted at the maximum position.)
4. These adjustments are always necessary when power amplifier is repaired. (module of MD-90-1250\*a)
5. Before adjustment is done, the tested unit must be pre-heated at least 3 to 5 minutes.

## A. BIAS CURRENT ADJUSTMENT

1. Connect voltmeter between R525 resistor. (See figure - point A and B)
2. Adjust VR501 to give a reading of DC ~~70~~ mV. *55*
3. Connect voltmeter between R526 resistor. (See figure - point C and D)
4. Adjust VR502 to give a reading of DC ~~70~~ mV. *55*
5. Connect the output of the amplifier to an oscilloscope/analyser (with 20Hz H.P. Filter) and adjust the VR501 or VR502 for minimum mains ripple at the output.
6. Repeat above for another channel.

# Amcli International Corp.

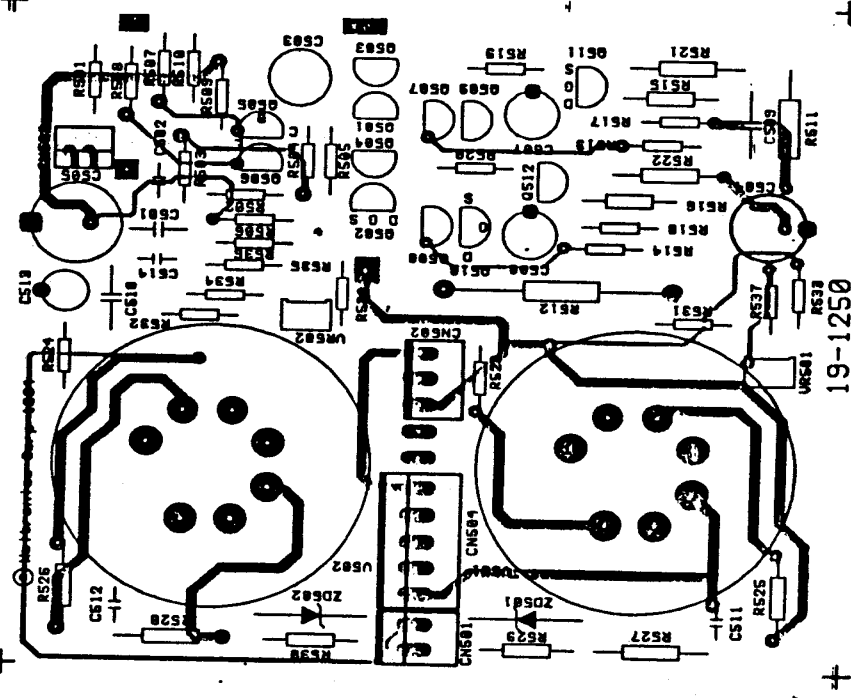
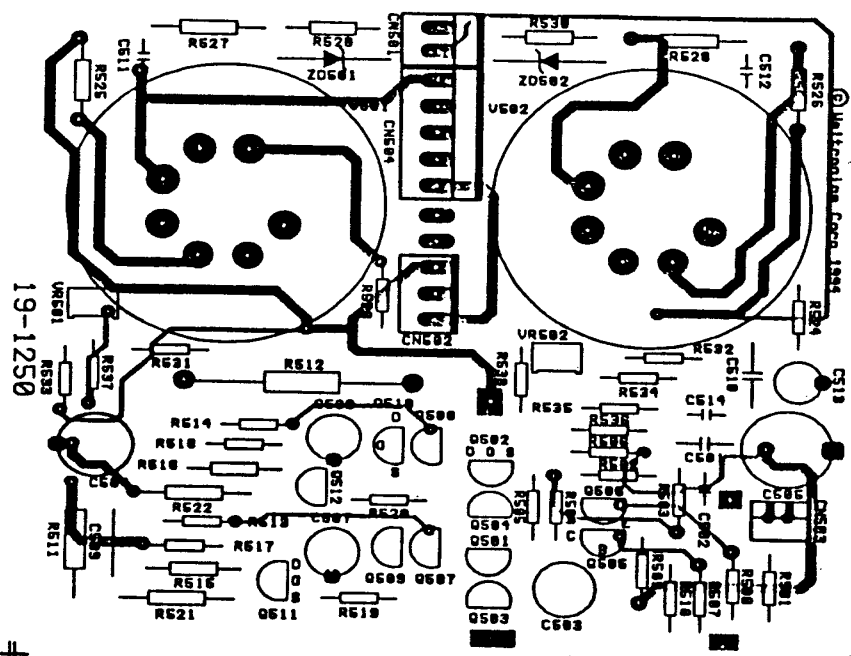
Division of the I. E. E. Group

P.O. Box: 43-181 Taipei Taiwan, R.O.C. Tel: 886-2-7001457, Fax: 886-2-7091059

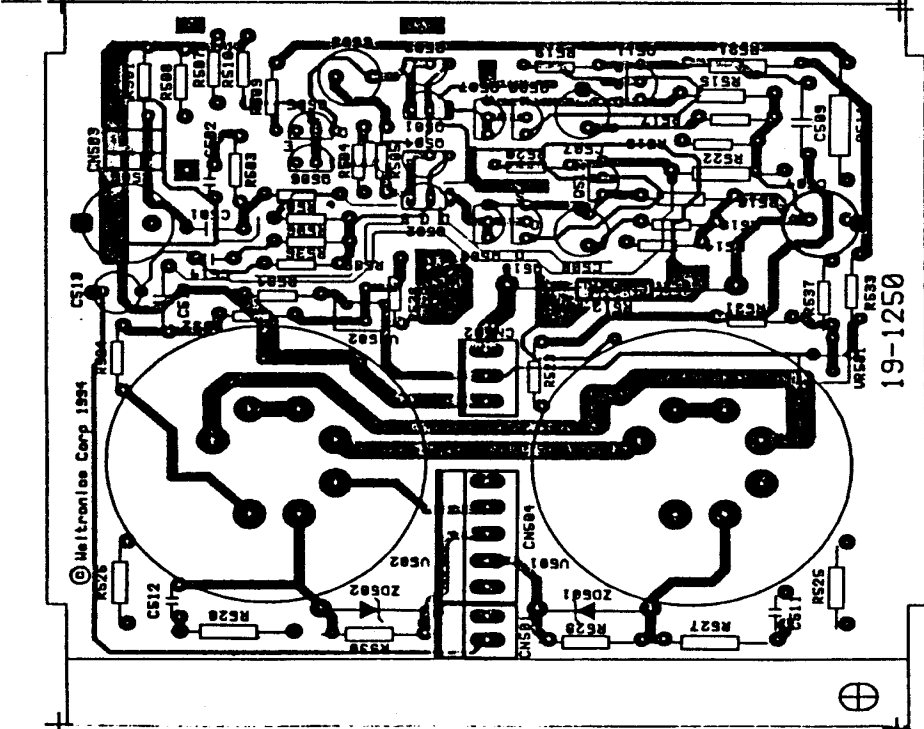
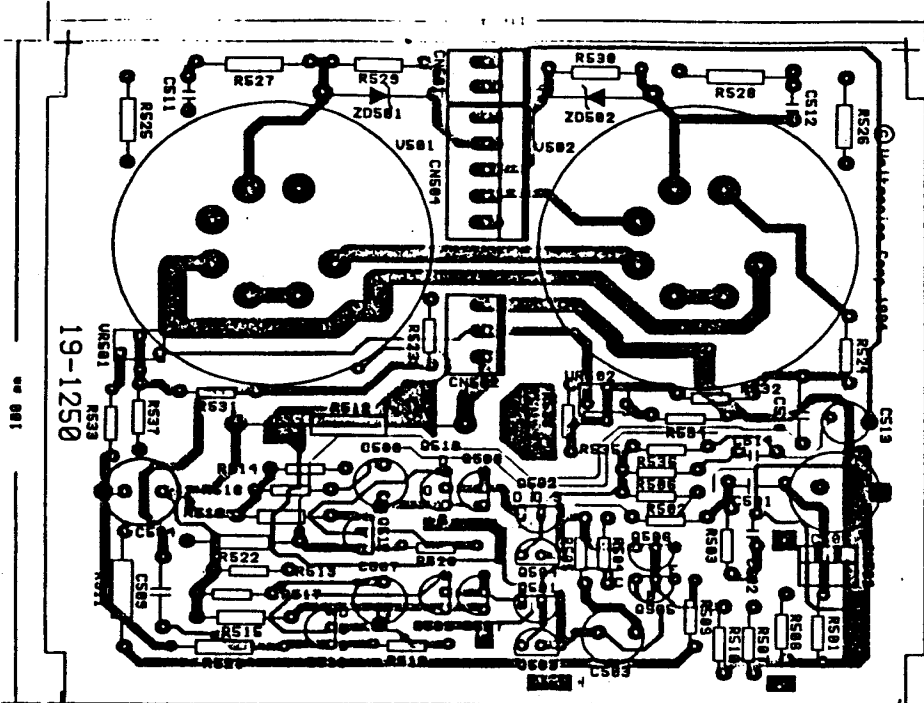
## CVT2100 SERVICE PARTS LIST

PARTS NO.	DESCRIPTION	SPRCIFICATION	REF
MD90-2149	POWER SUPPLY MODULE		
MD90-2150	POWER AMP MODULE		
	PACKING ASS'Y	CVT2100 AMC	
34-1065-1	POLYLONE, FRONT	CVT3030	
34-1065-2	POLYLONE, REAR	CVT3030	
CT-5248	INNER CARTON	CVT2100	CVT2100
CT-5249	OUTER CARTON	CVT2100	CVT2100
	CHASSIS ASS'Y	CVT2100 AMC	
50-1038-1	TOP COVER	BLACK CVT3030	
11-6167	MAIN CHASSIS		CVT2100
11-8469	FRONT PANEL	BLACK	CVT2100
28-10468-1	FOOT A		
28-10468-2	FOOT B		
11-6149*A	FRONT CHASSIS	CVT3030	
11-8470-1	REAR PANEL (120V)	CVT2100	CVT2100
11-8470-2	REAR PANEL (230V)	CVT2100	CVT2100
12-2134*A	BINDING POST, BLK		
12-2133*A	BINDING POST, RED		
29-2148	POWER TRANSFORMER	TAMURA CVT-PT-01	CVT2100
29-2149-1	OUTPUT TRANSFORMER	TAMURA CVT-OPT-01	CVT2100
29-2149-2	OUTPUT TRANSFORMER	TAMURA CVT-OPT-01	CVT2100
29-6115	DC FAN (AD0912LS-A70)	12V 90x90x2.5 MM	CVT2100
90-2149	POWER SUPPLY PCB ASS'Y	CVT2100 AMC	
30-1N5408	DIODE	1N5408 8A/Vrrm=1000V	CVT2100
30-1N4001	DIODE	1N4001 1A/Vrrm=50V	
30-1121	DIODE, BRIDGE	KBPO2 2A/Vrrm=200V	CVT2100
17-40E687M	CAP., EL.	680uF 400V +/-20%	CVT2100
32S1250250TU	FUSE, 5x20mm, BIAS, T-LAG	UL/CSA T250mA/250V, A/A1	
32S1250250TS	FUSE, 5x20mm, BIAS, T-LAG	SEMKO T250mA/250V, B1/EC	
32S12502K0TU	FUSE, 5x20mm, B+, T-LAG	UL/CSA T2A/250V, A/A1	
32S12502K0TS	FUSE, 5x20mm, B+, T-LAG	SEMKO T2A/250V, B1/EC	
32S11256K3TU	FUSE, 5x20mm, FLMT, T-LAG	UL/CSA T6.3A/125V, A/A1	
32S12506K3TS	FUSE, 5x20mm, FLMT, T-LAG	SEMKO T6.3A/250V, B1/EC	
32S11256K3TU	FUSE, 5x20mm, PRIMARY, T-LAG	UL/CSA T10A/125V, A/A1	
32S12503K15TS	FUSE, 5x20mm, PRIMARY, T-LAG	SEMKO T3.15A/250V, B1/EC	
31-1240	POWER SW	TV8 FD, SDDFA3117U-EK	
90-2150	POWER AMP. PCB ASS'Y	CVT2100 AMC	
29-4195-W503	1/4" SQUARE VR	50K 3362W	
30-5002	VACUUM TUBE	KT88	
30-VN0535N3	TRANSISTOR	NMOS, T092 VN0535.SUPERTEX	
30-VP0535N3	TRANSISTOR	PMOS, T092 VP0535.SUPERTEX	
30-PN2222	TRANSISTOR	NPN, T092 PN2222, MOTOROLA	
30-MPSA42	TRANSISTOR	NPN, T092 MPSA42, MOTOROLA	
16-3F271J	RES, METAL OXIDE	270 +/-5%, 3W	

⊕ ⊕

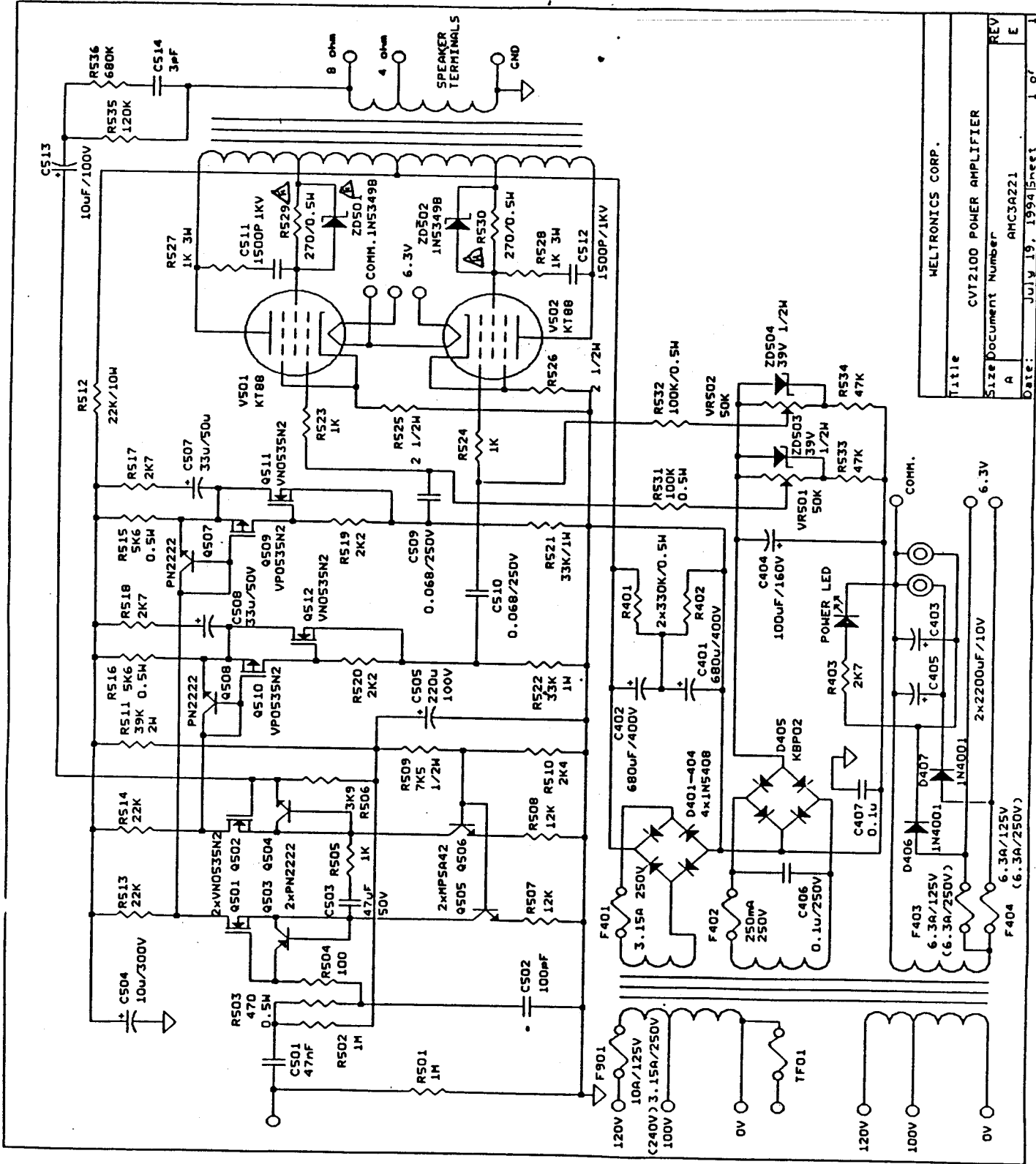


⊕ ⊕



00 001

18A



Title		MELTRONICS CORP.	
Size Document Number		CVT2100 POWER AMPLIFIER	
REV	A	AHC3A221	1 of 1
Date:	July 19, 1994	Sheet	1 of 1